

VURSAWEDGE

USER GUIDE



BURTON  BANDS

WELCOME TO THE **RESTORATION REVOLUTION**

Efficiency, consistency, and perfectly sealed gingival margins are all within reach thanks to a new matrix system designed Dr. Matthew Burton, DDS. Tested and perfected for years in his own practice, this revolutionary new system is now available to any clinician looking to streamline and simplify Class II procedures.

BURTON  BANDS

DESIGNED BY Dr. Matthew Burton, DDS



BURTON BANDS

MEET THE FAMILY

After trying nearly every matrix system on the market, Dr. Burton found that properly placing and wedging the matrix band was key to efficiency and consistency. If not performed correctly, it cost him valuable time, required unnecessary post polymerization adjustments, and ultimately led to a lack of confidence in the procedure. His inability to find a solution prompted him to start testing designs of his own. After years of trial and error, he found the key to success in a flexible, split-wedge design. This unique feature allows for proper contour of the matrix, perfectly sealed gingival margins, and is compatible with current major ring systems.



Scan here for

A MESSAGE FROM DR. BURTON



VURSAWEDGE

A revolutionary new split-wedge that provides a superior gingival seal, reduces flash, and decreases interproximal finishing time.



POSTERIOR SYSTEM

A matrix band and split-wedge combination that simplifies wedge and matrix placement and is versatile enough to be used with or without a ring.



ANTERIOR SYSTEM

A matrix band and split-wedge combination that provides structure for proximal wall formation while freeing both hands for filling and sculpting.

CLINICIAN FEEDBACK

Perfect marginal seals even in the presence of a concavity. The VursaWedge provides me with the ability to take a challenging operative case and make it routine. **Simply put, VursaWedge helps me do better operative dentistry.**

– DR. ROMENESKO

I used VursaWedge on a large Class II (28 DO) with a patient experiencing bone loss. I thought there was no hope for restoring the contour and getting contact. **I used VursaWedge and the Wedge 2 with my current ring and matrix. The contour came out so great!**

– DR. BERNSTEIN

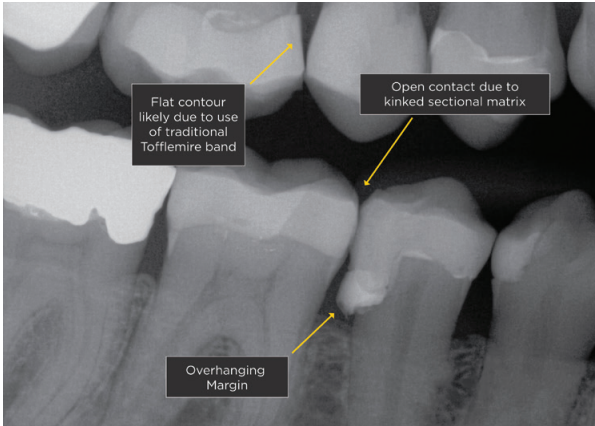
Those wedges are awesome! **I stopped using Palodent wedges and am having fun using a wedge that gives me way less adjustment time once the composite is cured.** I'm definitely a fan!

– DR. DOMINESSY

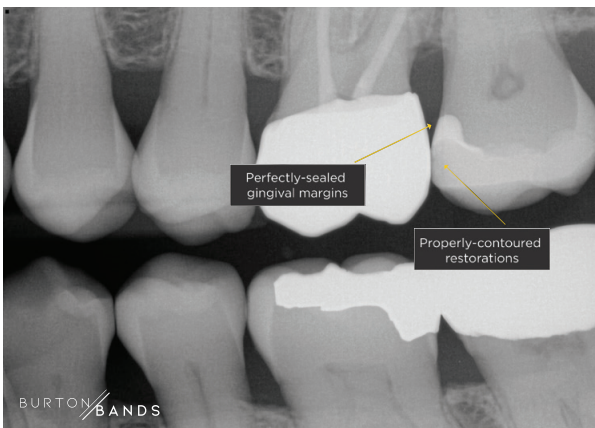


CLINICAL IMPROVEMENTS

Common outcomes using **TRADITIONAL METHODS**



Clinical improvements using the **BURTON BANDS METHOD**



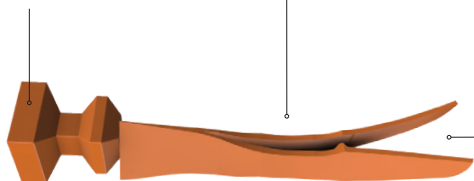
INTRO TO VURSAWEDGE

This revolutionary split-wedge can be used for all Class II restorations, from simple to complex. Featuring “wings” that gently curve next to and under the papilla, VursaWedge prevents upward displacement of the matrix band and ensures a tight, reliable seal at the gingival margin.

- Use it with your current system and technique
- Improve the longevity of restorations and reduce sensitivity
- Enjoy less interproximal finishing time
- Achieve reliable, predictable results

Square handle assists with insertion and removal

Wings wrap around margin and can be further secured using a ring



Split-wedge prevents papilla from displacing wedge upwards



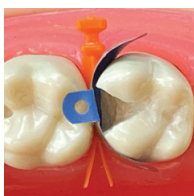
OPTIONAL WEDGE 2:

Used only when open margin is present or for slight furcation involvement to further secure wedge

EVERYDAY CASES

Compatible with all major ring systems (Garrison, Palodent, and Triodent) as well as circumferential matrix systems such as ProMatrix and Palodent 360.

HOW TO USE:



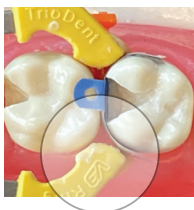
1

Place VursaWedge in the embrasure. Do not use Wedge 2 unless open margin is present or for slight furcation involvement. Wedge 2 is not necessary in MOST cases.



2

Position one wing over the handle.



3

Position the other wing in between the split wings.

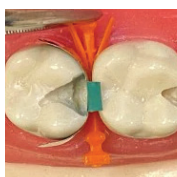


Scan here to view a
VIDEO DEMONSTRATION

IRREGULAR MARGINS

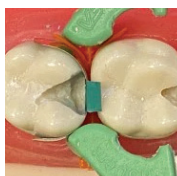
Seal irregular margins using Wedge 2. **Wedge 2 is not necessary in most cases.** Use only when open margin is present or for slight furcation involvement.

HOW TO USE:



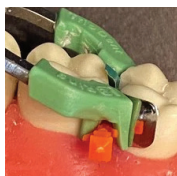
1

Place Vursawedge in the embrasure.



2

Place Wedge 2 in between split wings of Vursawedge. The two wedges will gently lock in place.



3

Place ring over the set-up.

NOTE:

4

Ring can be placed in between split wings to further engage them. In most cases, however, split wings will not need to be engaged when Wedge 2 is present.



Scan here to view a
VIDEO DEMONSTRATION

QUADRANT RESTORATIONS

VursaWedge allows both margins on adjacent teeth to be sealed simultaneously, streamlining and simplifying quadrant restorations.

HOW TO USE:



1

Place VursaWedge in the embrasure.



2

Place ring over the set-up.

NOTE:

3

The split-wedge design ensures the matrices sit correctly in the proximal box, creating proper contours and contacts.



Scan here to view a
VIDEO DEMONSTRATION

TIGHT EMBRASURES

VursaWedge can be modified for tight embrasure cases, especially in maxillary molar location.

HOW TO USE:



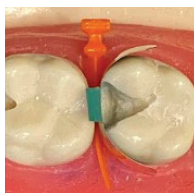
1

Determine which wing would contact the adjacent tooth.



2

Using a pair of scissors, remove the wing that would contact the adjacent tooth.



3

Place ring over the handle and allow ring to press single wing of VursaWedge to seal margin.



CUSP CASES

Simplify cusp cases by keeping pressure off the fragile matrix, streamlining wider preparations.

HOW TO USE:



1

Insert VursaWedge so that the split wings open up to the side of the cuspal involvement.



2

Gently place ring ensuring the ring pad sits in between the split wings.

NOTE:

3

Can also be used with circumferential matrix systems such as ProMatrix and Palodent 360.



Scan here to view a
VIDEO DEMONSTRATION

QUICK TIPS



1

VursaWedge can be inserted from either buccal or lingual.

2

If wings do not open after placing into embrasure, gently remove about half-way and then reinsert the wedge.

3

For subgingival cases, point the tips of the VursaWedge into the sulcus and this will allow wedge to stay subgingival.

4

For larger cases, insert wedge so that the split wings open with the embrasure space (i.e., split wings should open on side of cuspal fracture).

5

Keep in mind you can restore base of box with matrix and VursaWedge in place...then place ring.

TROUBLESHOOTING:

1

OPEN CONTACTS:

Improper Use of Wedge 2: Open contacts MAY RESULT if wedge 2 is used when it is not needed. Try using VursaWedge and your ring without Wedge 2.

Not Using a Ring: VursaWedge is meant to be used with a ring. The ring ensures matrix stability and prevents shifting.

Matrix Band: Not burnishing the matrix band or using the incorrect matrix size can also contribute to open contacts.

2

DIFFICULTY PLACING WEDGE:

Tight Embrasures: VursaWedge is meant to be modified for tight spaces. Refer to page 12 for technique.

Large embrasures: Additional sizes for larger embrasures available June 2021.

HOW TO ORDER

Available *exclusively* through Young Specialties.

VURSAWEDGE KIT

SKU: VK1001 | Price: \$79

Includes 100 pieces:

- 50 Split Wedges
- 50 Wedge 2



Scan here to
SHOP NOW!



POSTERIOR SYSTEM

SKU: PK1001 | Price: \$299

Includes:

- 40 left-facing Split Wedges
(20 small, 20 large)
- 40 right-facing Split Wedges
(20 small, 20 large)
- 80 Wedge 2
- 10 VursaWedge sets with Wedge 2



Scan here to
SHOP NOW!



How-to videos available online

INTRO KIT

SKU: IK1001 | Price: \$159

Includes:

- 10 left-facing Anterior wedges
- 10 right-facing Anterior wedges
- 10 left-facing Posterior Split Wedges
(5 small, 5 large)
- 10 right-facing Posterior Split Wedges
(5 small, 5 large)
- 20 Posterior Wedge 2
- 10 VursaWedge sets (split-wedge
and wedge 2)



Scan here to
SHOP NOW!



How-to videos available online



BURTON  BANDS

Available *exclusively* through Young Specialties
800-558-6684 | www.youngspecialties.com

YOUNG[™]
SPECIALTIES

LIT-BBVWUG Rev. A